

PTZ600 Jobsite Camera

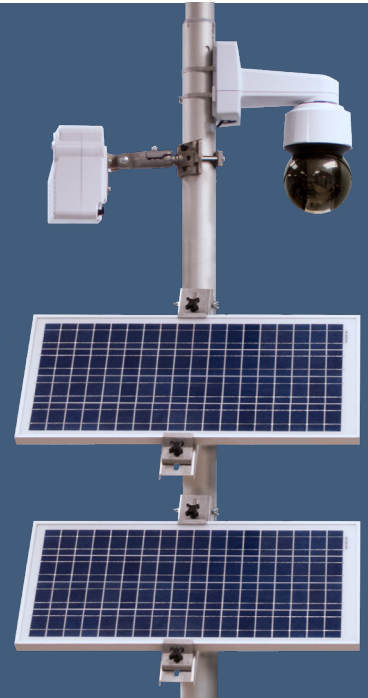
Solar Powered Smart Panoramic Jobsite Camera

PTZ600VG-3-10x PTZ Camera Kit

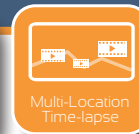
Time-lapse, Panoramas, Risk and Safety Made Easy

The PTZ600 camera is designed for advanced user remote site monitoring including progress documentation, safety applications, and productivity and logistics management. Ideal for large-scale sites requiring a wide coverage area and fine detail, this powerful camera provides three important new capabilities: multi-location time-lapse, automated panoramas, and live streaming with real-time PTZ control.

The PTZ600 is powered by Sensera's SiteCloud® platform which provides easy-to-use software for viewing, monitoring, and sharing real-time site data, detecting actionable insights, and simplifying work-flow.



Pan 360°, Tilt 65°
10x Zoom



Multi-Location
Time-lapse



4K
Time-lapse
Video



100 Megapixel
Panorama Capture

SiteCloud is tightly integrated with Sensera's complete line of jobsite cameras, mobile apps, and drone photography services to provide comprehensive automated site monitoring from a simple web interface. SiteCloud service includes WiFi and 4G LTE connectivity making it a true end-to-end solution. Integrations with Procore, Autodesk® Construction Cloud, and PlanGrid simplify and automate workflow across the enterprise.

Multi-location Time-lapse

Multi-location time-lapse allows for capturing as-built imagery at unprecedented detail of the locations that matter most as the project progresses.



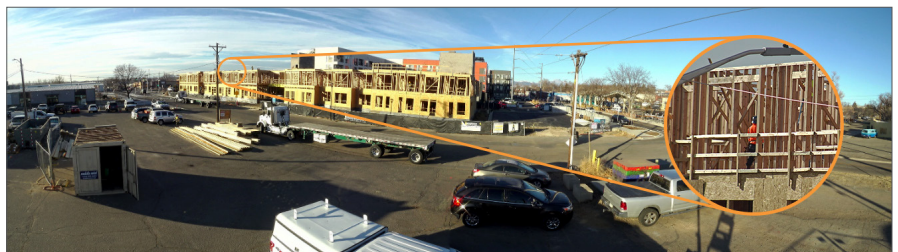
Automated Panoramas

Automated panoramas allow up to 360-degree coverage for large sites, at resolutions up to 100MP.



Live Streaming with PTZ Control

Live streaming with real-time pan/tilt/zoom (10x optical zoom) allows remote stakeholders to monitor progress, equipment and materials at very fine detail.



Plug 'n Play Installation & 24/7 Access

- Compact, Light-weight, & Easy to Move
- Improve Collaboration with Stakeholders
- Market/Promote Your Projects & Business
- Mitigate Risk, Enforce Safety Processes
- Reduce Liability, Lower Insurance Costs

PTZ600 Site Camera

Technical Specifications



PTZ600VG-3-10x PTZ Camera Kit

CAMERA

| | |
|------------------------|--|
| Image Sensor | CMOS |
| Resolution (still) | 8 Megapixel (3840 x 2160). Configurable to lower resolutions. |
| Panorama | Stills up to 100 Megapixels |
| Resolution (streaming) | 1280 x 1080 (1080p) |
| Video Compression | MJPEG |
| Video Streaming | MJPEG streams. Supports multiple viewers of live video stream. |
| Range of Motion | Pan: 360°, Tilt: 65° |
| Field of View (FoV) | H FoV 70.7° (zoomed out), 6.2° (zoomed in) V FoV 39.5° (zoomed out), 3.5° (zoomed in) |
| Field of Regard | 360°(h) x 104.5°(v) |
| Optical Zoom | 10x |

NETWORK

| | |
|----------|--------------------------------------|
| Cellular | 4G LTE (multiple carriers available) |
| WiFi | 802.11 b/g/n/a/ac |
| GPS | Built-in GPS positioning |

POWER

| | |
|-----------------------|--|
| Solar Power Input | 18-24VDC with Maximum Power Point Tracking (MPPT) |
| Solar Panel | 2 x 35W (Approx) (Included) |
| Auxiliary Power Input | 18-24VDC |
| Battery | Integrated rechargeable Lithium Iron Phosphate (LiFePO4). 5 days power typical |
| Supply Power | 110/220VAC input @ < 0.74 Amps via included AC/DC power adapter. |
| Camera Power | 18-24VDC @ < 1.5 Amps @ 24 V Max 30W, (2.5 Amps @ 12 V) |

PHYSICAL

| | |
|------------------------|---------------------------------|
| PTZ Camera Head Dim. | 6" (W) x 12" (D) x 14" (H) |
| PTZ Camera Head Wgt. | 10 lbs |
| PLC Unit Dimensions | 7.5" (W) x 9.75" (D) x 8.5" (H) |
| PLC Unit Weight | 10 lbs |
| Solar Panel Dimensions | (2) 31" x 14" x 1" Panels |
| Solar Panel Weight | 7 lbs each x 2 (14 lbs total) |
| Mounting Hardware | Pole/wall mount included |

SPECIFICATIONS SUBJECT TO CHANGE
Images are for illustration purposes only

ENVIRONMENTAL

| | |
|-----------------------|--------------------------------|
| Operating Temperature | -20°C (-4 °F) to +50°C (122°F) |
| Enclosure Material | Polycarbonate |
| Encapsulation | All-Weather IP65 |

SITECLOUD REMOTE MANAGEMENT HIGHLIGHTS

| | |
|---|--|
| Camera Admin/Monitoring | Administer and manage camera from any web enabled device. Multi-user. 24/7 access. |
| Image Archival | Secure archival of images, Time-lapse video. View and download anytime. |
| Time-lapse Video | Create automated and on-demand time-lapse video with the click of a button. View and download anytime. |
| Multi-Location Time-lapse Capture Video | Create automated time-lapse video of preset fields-of-view (up to 3 locations). Video/image recording with web-based upload. |
| Live Video Streaming | View live video from any web enabled device. |
| Pan-Tilt-Zoom | Real-time pan, tilt, zoom control while streaming. |
| Panoramas | Automated scheduled panorama capture and viewing (up to 100 MP). |
| Project Updates | Schedule daily/weekly emailed image updates to project team/stakeholders. |
| Public Access URL | Show your work to the public via a public URL, or embed in your website. |
| Workflow Integrations | Integrated with popular project management software including: Autodesk Construction Cloud, Procore and PlanGrid. |

See the *SiteCloud datasheet* for full details on *SiteCloud Software and Service*

ORDERING

| | |
|-------------------------|--|
| PTZ600VG-3-102 | PTZ600 Camera Kit (Solar + AC) |
| PTZ600VG-3-101 | PTZ600 Camera Kit (AC Only) |
| RTL-PTZ600VG-3-10x-xxxx | Rental includes camera, integrated battery packs, 2 solar panels, mounting brackets. Requires SiteCloud Service for operation. |
| Available Carriers | Verizon, AT&T, T-Mobile (United States) Telus and Rogers (Canada), plus World-Wide. |
| Cloud Service | SiteCloud cellular plans start at 20GB |
| Optional Accessories | 20' Telescoping Pole, Portable Solar Trailer. |